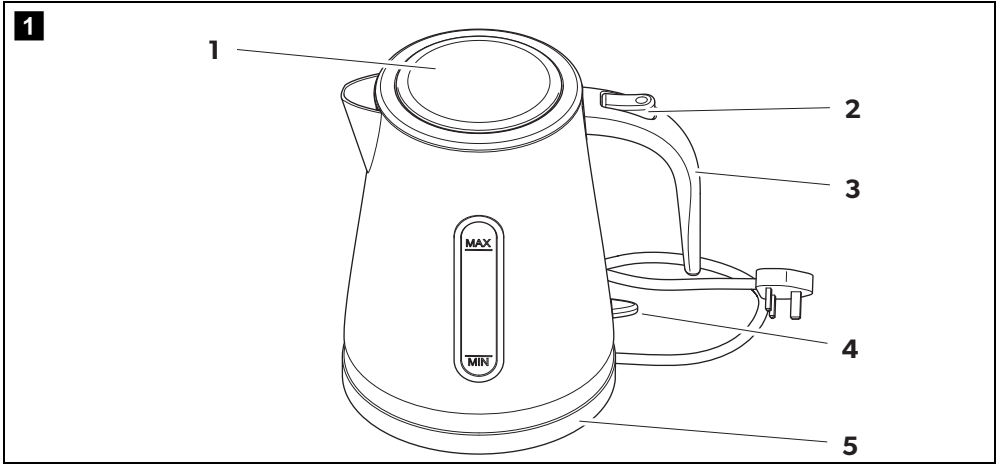


Fizz

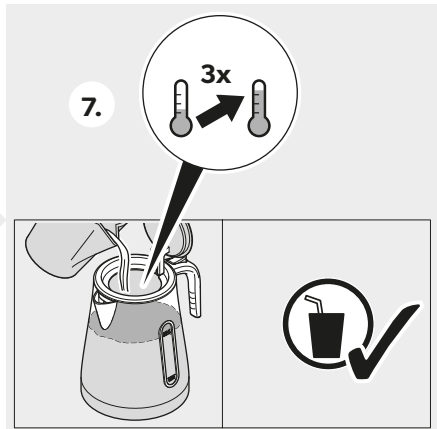
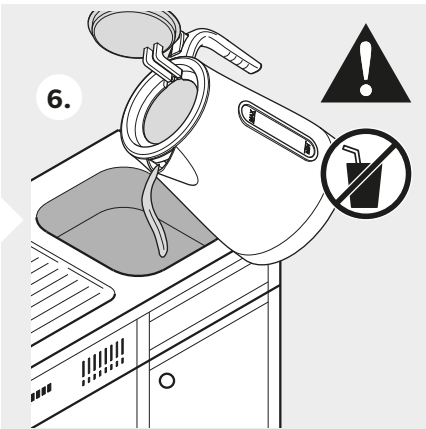
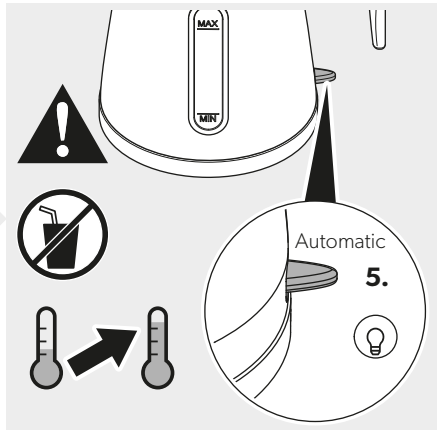
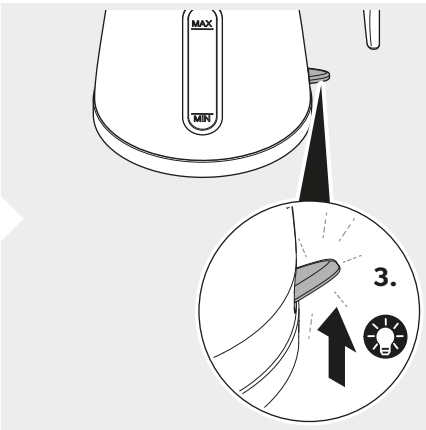
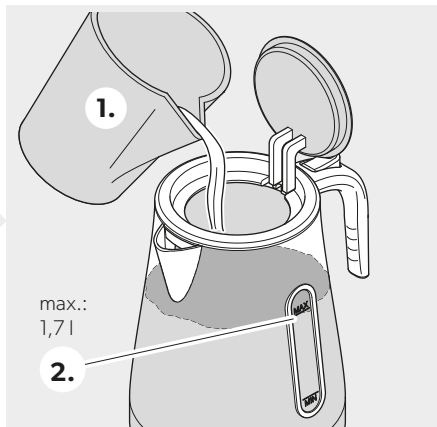
EN

Kettle
Operating manual

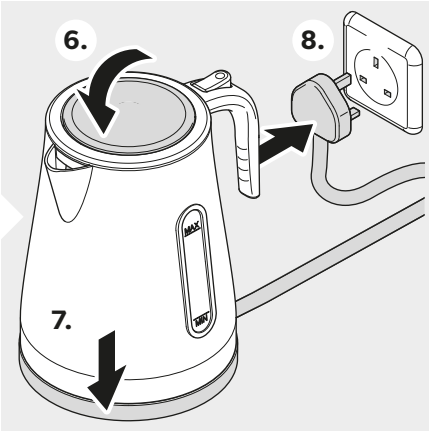
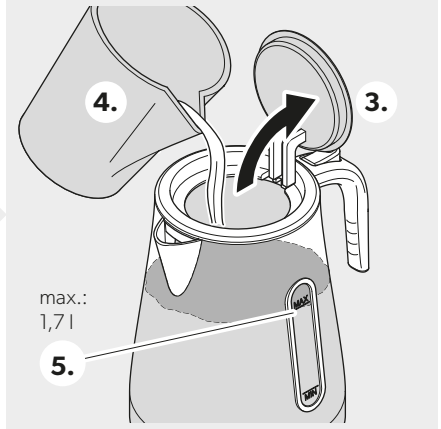
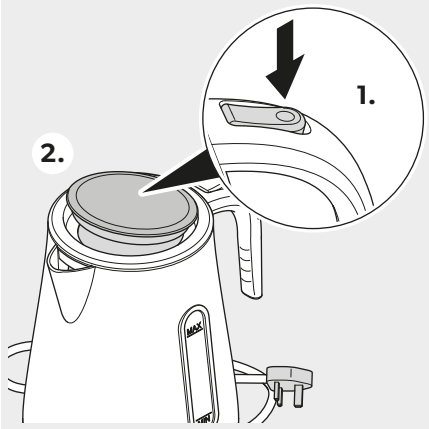
© 2021 Dometic Group. The visual appearance of the contents of this manual is protected by copyright and design law. The underlying technical design and the products contained herein may be protected by design, patent or be patent pending. The trademarks mentioned in this manual belong to Dometic Sweden AB. All rights are reserved.

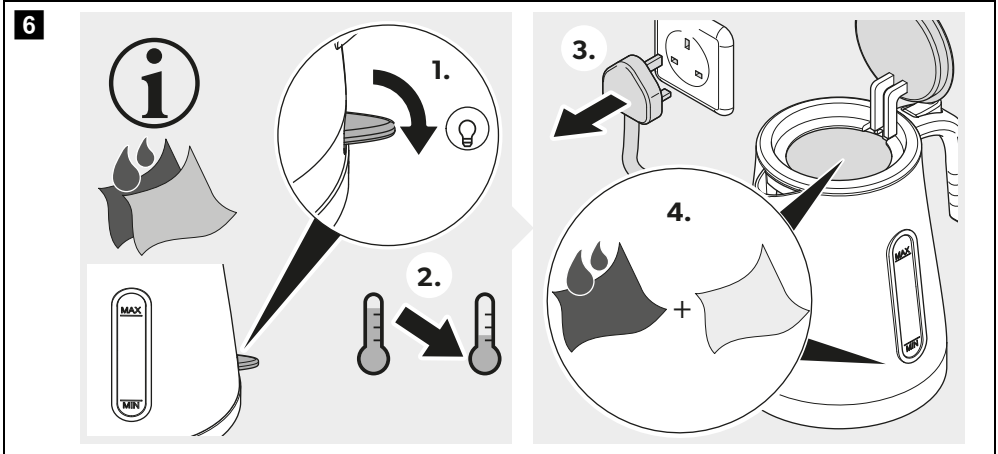
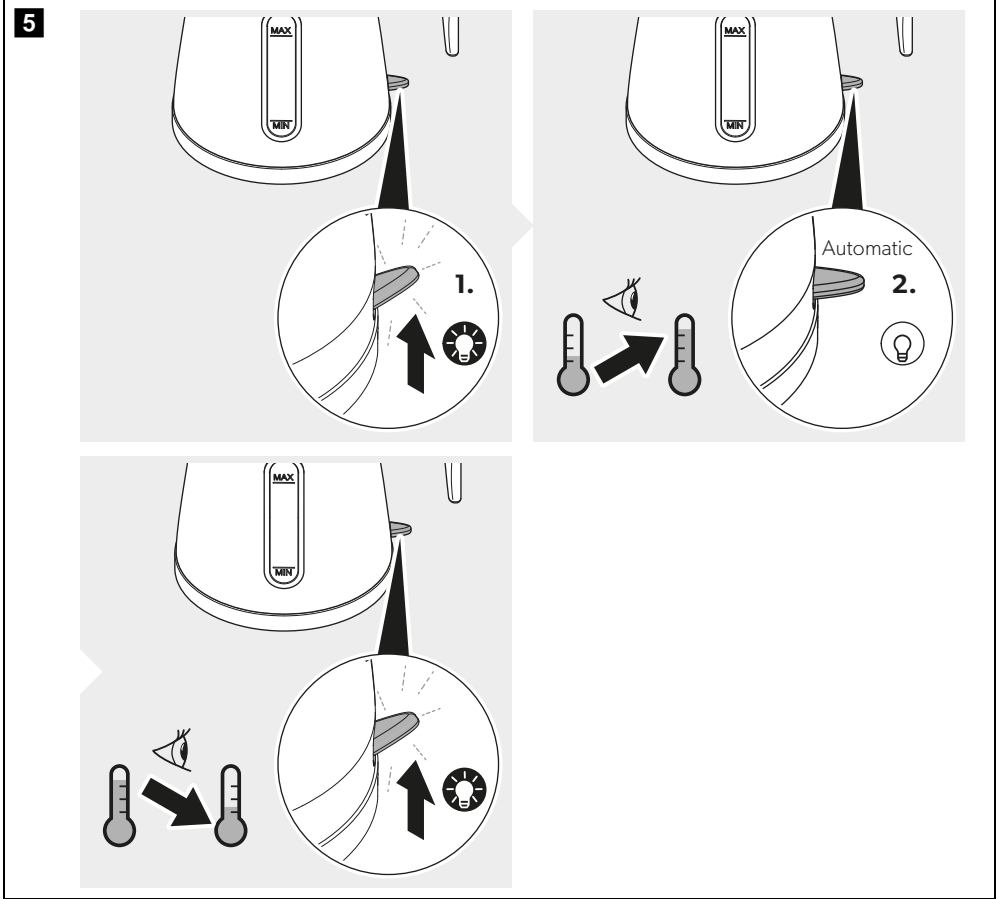


3

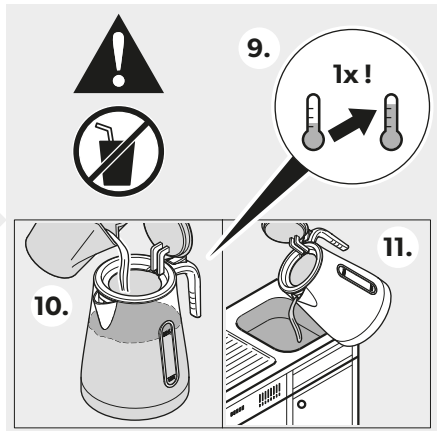
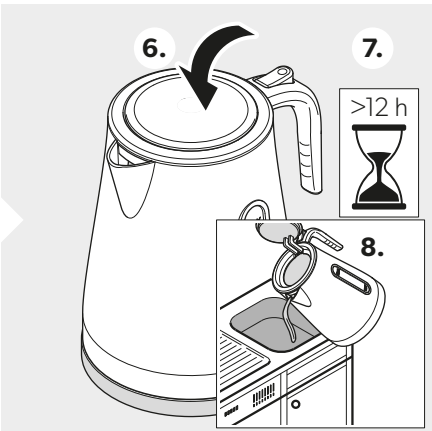
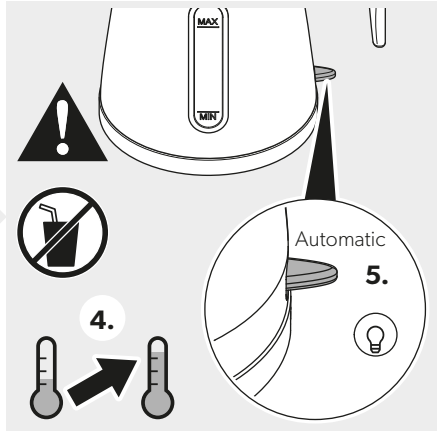
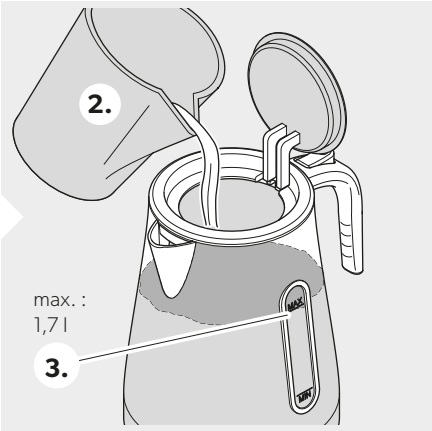
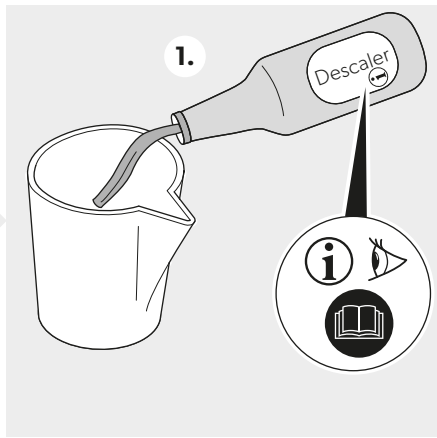


4





7



Please read these instructions carefully and follow all instructions, guidelines, and warnings included in this product manual in order to ensure that you install, use, and maintain the product properly at all times. These instructions **MUST** stay with this product.

By using the product, you hereby confirm that you have read all instructions, guidelines, and warnings carefully and that you understand and agree to abide by the terms and conditions as set forth herein. You agree to use this product only for the intended purpose and application and in accordance with the instructions, guidelines, and warnings as set forth in this product manual as well as in accordance with all applicable laws and regulations. A failure to read and follow the instructions and warnings set forth herein may result in an injury to yourself and others, damage to your product or damage to other property in the vicinity. This product manual, including the instructions, guidelines, and warnings, and related documentation, may be subject to changes and updates. For up-to-date product information, please visit kampaoutdoors.com.

Explanation of symbols



WARNING!

Safety instruction: Indicates a hazardous situation that, if not avoided, could result in death or serious injury.



NOTICE!

Indicates a situation that, if not avoided, can result in property damage.

Safety instructions



WARNING! Failure to obey these warnings could result in death or serious injury.

Electrocution hazard

- Do not operate the kettle if it is visibly damaged.
- If this kettle's power cable is damaged, it must be replaced by the manufacturer, a service agent or a similarly qualified person in order to prevent safety hazards.
- This kettle may only be repaired by qualified personnel. Improper repairs can lead to considerable hazards.
- Make sure the power supply is the same as the one on the nameplate.
- Avoid the power cord, plug or other electrical part to get contact to water or any other liquid.
- Do not allow the power cord to get in touch with any hot surface.

Health hazard

- This kettle can be used by children aged from 8 years and above and persons with reduced physical, sensory or mental capabilities or lack of experience and knowledge if they have been given supervision or instruction concerning use of the kettle in a safe way and understand the hazards involved.
- Keep the appliance and its cord out of reach of children aged less than 8 years.
- Children shall not play with the kettle.
- Cleaning and user maintenance shall not be made by children unless they are older than 8 years and supervised.
- Close supervision is necessary when the kettle is used by or near children.
- Do not use the kettle to boil water while driving.
- Store all parts of the kettle safely before starting your journey.

Burn hazard

- The kettle can become very hot. Use the handle only. Keep the kettle and the power cord out of the reach of children at all times.
- The lid must be securely closed to avoid spillage of boiling water.

Fire hazard

- When positioning the kettle, ensure the supply cord is not trapped or damaged.
- Do not use the kettle on hot surfaces and do not place it near naked flames.



NOTICE! Damage hazard

- The kettle shall not be exposed to rain.
- Do not switch the kettle on when it is empty.
- Descale the kettle regularly.

Intended use

The kettle is suitable for:

- boiling water
- domestic use only

The kettle is **not** suitable for:

- use with any other liquid than water
- outdoor use

This kettle is only suitable for the intended purpose and application in accordance with these instructions.

This manual provides information that is necessary for proper installation and/or operation of the kettle. Poor installation and/or improper operating or maintenance will result in unsatisfactory performance and a possible failure.

The manufacturer accepts no liability for any injury or damage to the product resulting from:

- Incorrect assembly or connection, including excess voltage
- Incorrect maintenance or use of spare parts other than original spare parts provided by the manufacturer
- Alterations to the product without express permission from the manufacturer
- Use for purposes other than those described in this manual

Kampa reserves the right to change product appearance and product specifications.

Technical description

The kettle is designed with a maximum capacity of 1.7 l.

Product overview

No. in fig. 1	Designation
1	Lid
2	Opening button
3	Handle
4	ON/OFF switch
5	Base

Using the kettle



WARNING! Burn hazard

- Do not operate the kettle when driving.
- Do not leave the kettle unattended.
- Do not touch the kettle body. Use the handle only.



WARNING! Fire hazard

Always ensure that the kettle is switched off and unplugged when the kettle is not in use.

Setting up the kettle

- Proceed as shown in fig. **2**.

Before initial use

For hygienic reasons, dispose of the first two portions of boiled water.

- Proceed as shown in fig. **3**.

Filling the kettle with water

The kettle has a minimum and maximum indication mark. The automatic dry boil protection protects the kettle against overheating in case the kettle is switched on when containing an insufficient amount of water. In case the automatic dry boil protection has operated, switch the kettle off, disconnect the plug and wait 5 to 10 minutes until the kettle has cooled down.

- Proceed as shown in fig. **4**.

Switching on and off

- Proceed as shown in fig. **5**.

The kettle is switched off automatically after boiling.

Cleaning and maintenance



WARNING!

Unplug the kettle from the socket before cleaning and maintenance.



NOTICE!

Do not use sharp or hard objects or cleaning agents for cleaning as these may damage the product.

Cleaning

- Proceed as shown in fig. **6**.

Descaling



WARNING! Health hazard

- For health and ecological reasons, use only biological descaler or a mixture of one part ordinary vinegar and two parts water.
- Purchase descaler only in specialist stores.
- Do not under any circumstance use hydrochloric or sulphuric acid for descaling.
- Observe the application and dosing recommendations of the manufacturer of the descaler.

To ensure quick heating and extend the service life of the heater coil, the kettle regularly has to be descaled.

Noticeable signs that descaling is necessary are:

- Prolonged boiling time
 - Loud boiling noises
 - Visible deposits on the base
- Proceed as shown in fig. **7**.

Warranty

The statutory warranty period applies. If the product is defective, please contact the manufacturer's branch in your country (see kampaoutdoors.com/store-locator) or your retailer.

For repair and warranty processing, please include the following documents when you send in the device:

- A copy of the receipt with purchase date
- A reason for the claim or description of the fault

Disposal

► Place the packaging material in the appropriate recycling waste bins, wherever possible.



If you wish to finally dispose of the product, ask your local recycling center or specialist dealer for details about how to do this in accordance with the applicable disposal regulations.

Technical data

	Fizz
Connection voltage:	220 – 240 V $\overline{=}$
Power input:	1000 W
Power consumption:	4.35 A



Together outdoors

kampaoutdoors.com

Part of the Dometic Group

We distribute our products in around 100 markets. Please ask for your contact point or check the web. kampaoutdoors.com

Manufacturer: Dometic UK Awnings Limited, Witham, Essex, UK

Importer EU: Dometic Germany GmbH, Hollefeldstraße 63, 48282 Emsdetten, Germany